



# Establishing an International Panel on the Sustainable Use of Natural Resources

**Decoupling economic growth from environmental impact**



*Division of Technology, Industry and Economics*

# What are we talking about?

Consuming and producing **more efficiently**  
and differently ...



... and **sharing**  
**resources** between  
the rich and the poor.

# Global political context of SCP and resource use

- **JPoI - Chapter II: Poverty Eradication**  
→ Resource use contributing to MDGs
- **JPoI - Chapter III: Sustainable Consumption and Production**  
→ 10 year framework on SCP/  
Marrakech Process/ CSD 2010-2011



# Global scientific activities in relation to resource use

- **IPCC – Climate Change due to fossil fuels**
  - Impacts due to use of other natural resources?
- **Millennium Ecosystem Assessment**
  - Linkages from impacts to use of natural resources?





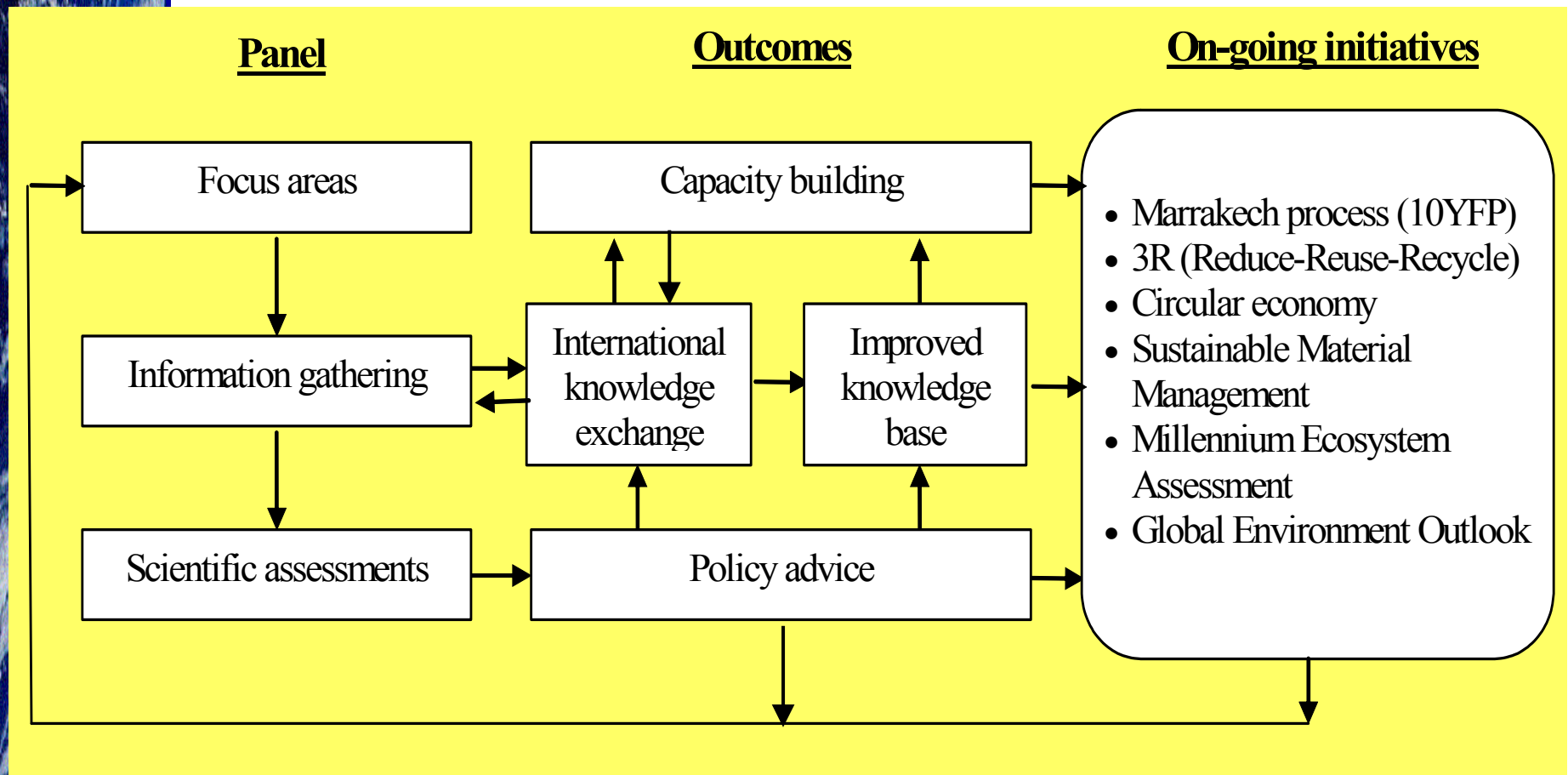
# Objective of the Panel

- Gather information and provide independent **scientific assessments** to national governments and relevant international organizations **on key environmental impacts** of the use of natural resources in a life cycle perspective
- Advice on **strategies and approaches to reduce these impacts** in growing economies through changing unsustainable patterns of sustainable consumption and production
- Support **enhancement of scientific knowledge and build capacity** in developing countries

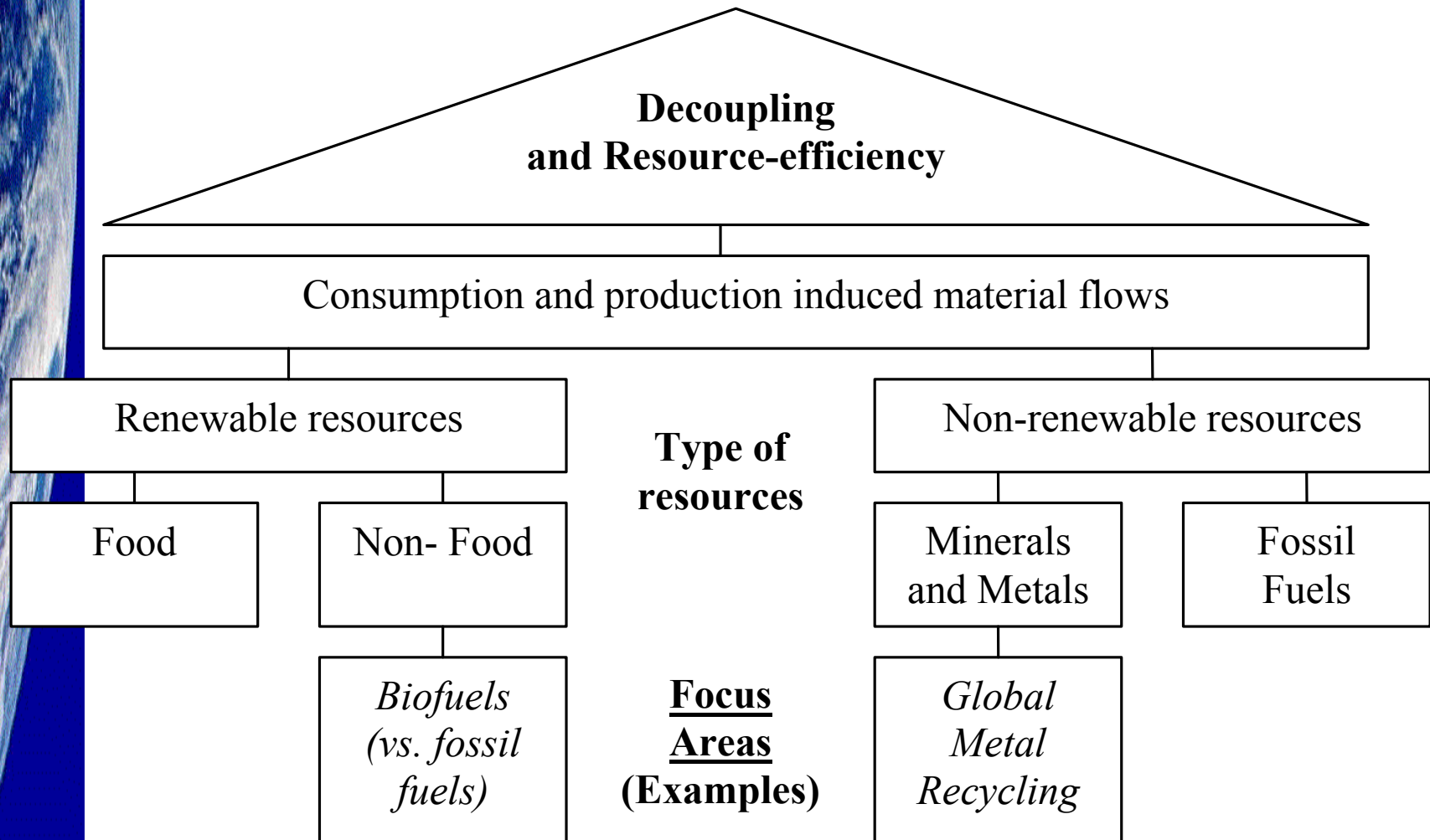
# The Resource Panel will help to ...

- 1. Increase resource efficiency and decouple environmental impact from economic growth**
  - > Relevant policies
- 2. Improve processes, products and services**
  - > Business innovation
- 3. Enhance awareness and dialogue on efficient resource use**
  - > Improved quality of life
- 4. Contribute to ongoing initiatives**
  - > Marrakech Process on SCP
  - > 3R, Circular Economy, Sustainable Material Management, others

# The Panel's outcomes and scientific support to on-going initiatives



# Focus on selected material flows ...



# ... and their environmental impacts ...

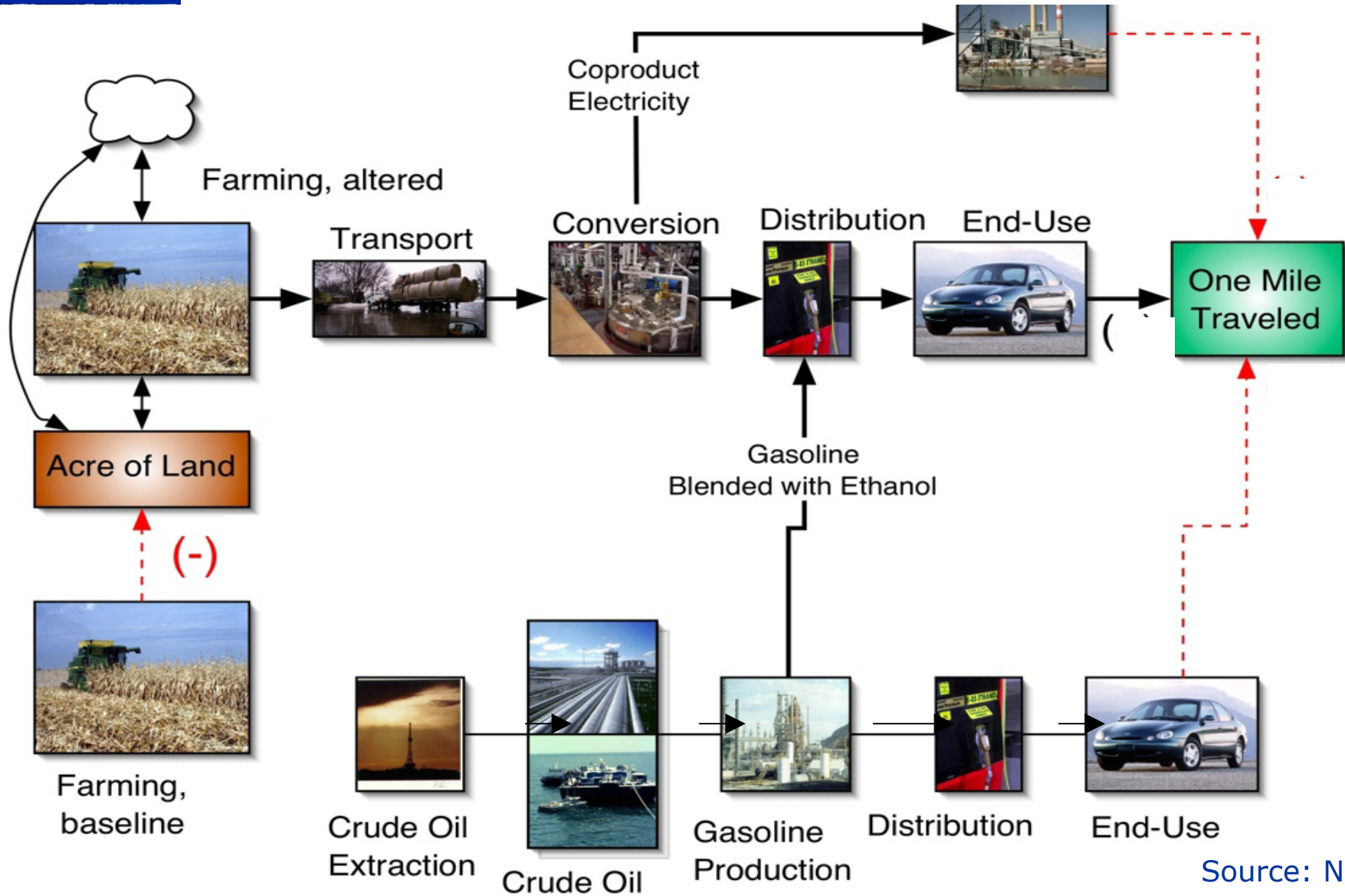
<i>Impact</i> <i>Resource</i>	Global Warming	Biodiversity & Land use	Toxicity	Water quality
<b>Food</b>	++	+++	++	++
<b>Non-Food</b>	+	++	++	+++
<b>Minerals &amp; Metals</b>	+	+	++	+
<b>Fossil Fuels</b>	+++	+	++	+



Source:  
Adapted  
from N&M



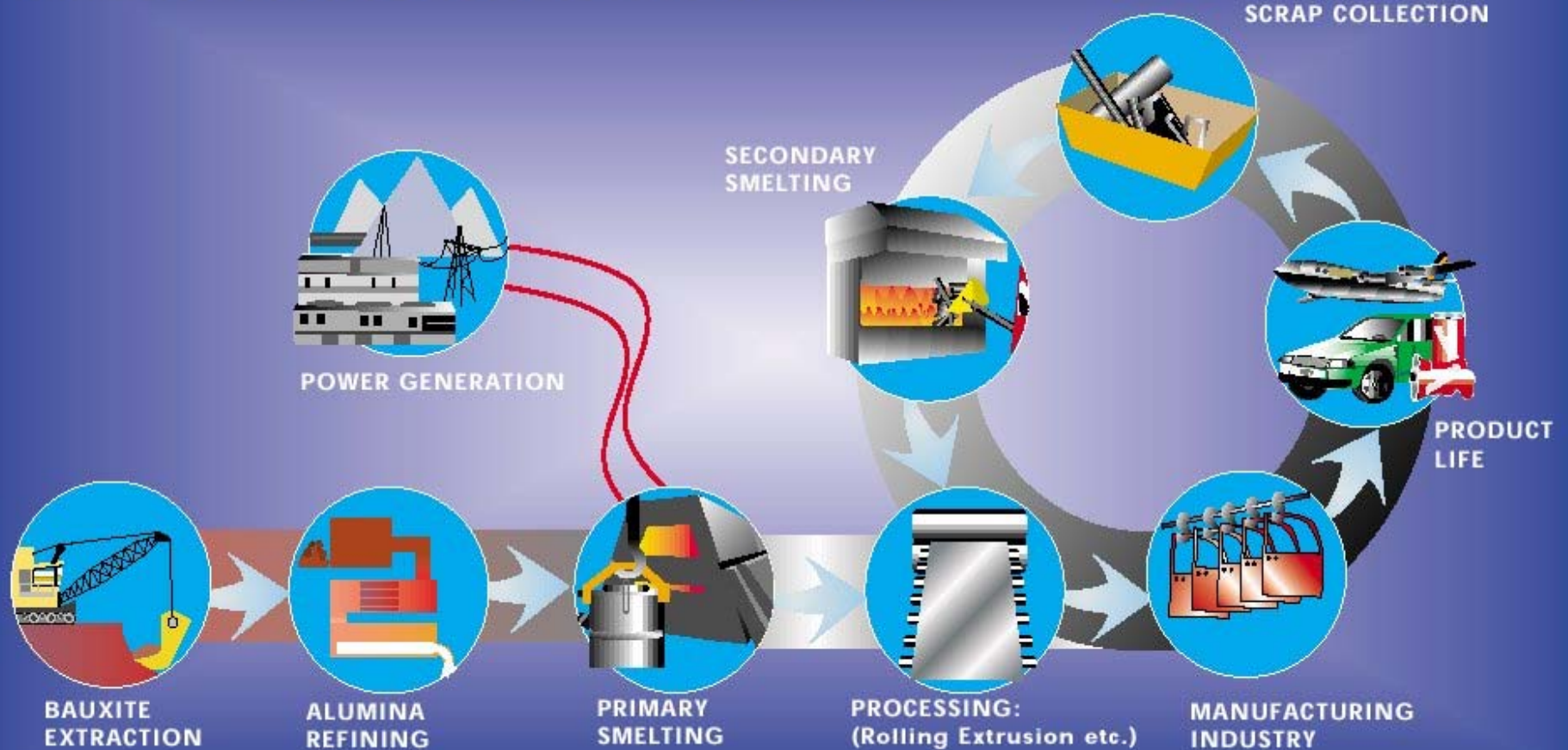
# ... in a life cycle perspective like for biofuels



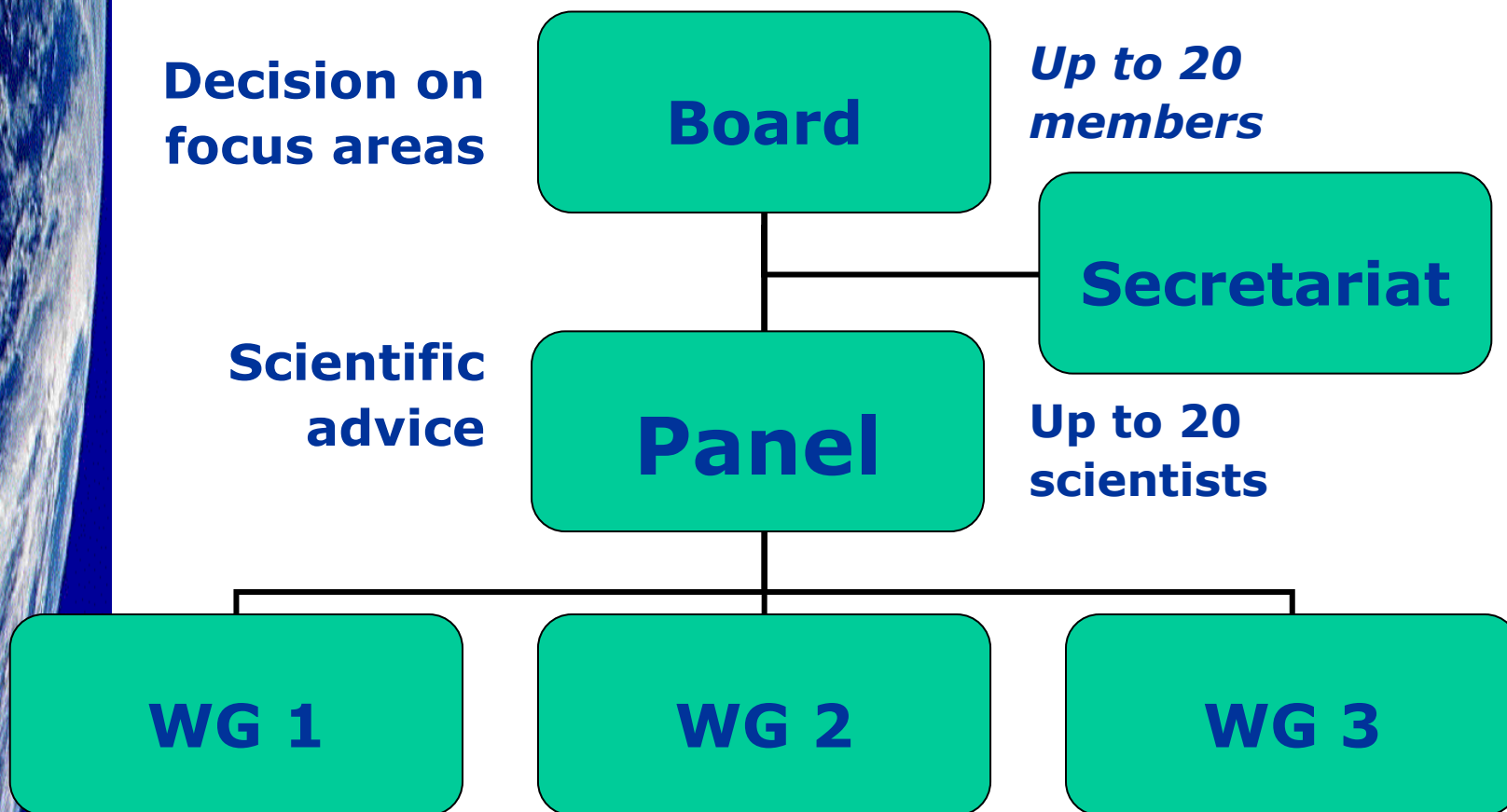
Source: NREL

# ... and recyclable metal resources ...

## ALUMINIUM PRODUCTION AND LIFE CYCLE



# Tentative structure



# Milestones so far and next steps

Pre-Panel and Pre-Board meetings



GC 24 side event  
and consultations



Second Pre-Board  
meeting, April 2007



Inaugural Panel  
meeting, June 2007

## **Invitation to:**

- Join the Board
- Recommend independent high-level scientists
- Provide financial support

# For more information:

## Secretariat

- SCP Branch, UNEP DTIE, Paris, France
- <http://www.unep.fr/sustain>
- Email: [sc@unep.fr](mailto:sc@unep.fr)

## Working in **collaboration with** other:

- DTIE branches
- UNEP divisions
- UN agencies

