



UNEP/WUPPERTAL INSTITUTE COLLABORATING
CENTRE ON SUSTAINABLE
CONSUMPTION AND PRODUCTION

CREATING SOLUTIONS FOR SUSTAINABLE CONSUMPTION AND PRODUCTION



UNEP

United Nations Environment Programme

Science Centre
North Rhine-Westphalia

Institute of Work
and Technology



Institute for Culture
Studies

Wuppertal Institute for
Climate, Environment and
Energy



WHAT IS THE CSCP?

The CSCP – Centre on Sustainable Consumption and Production – was established in 2005 as a not-for-profit think-tank and “do-tank” from the collaboration between two world-renowned institutions: the United Nations Environment Programme (UNEP) and the Wuppertal Institute for Climate, Environment and Energy.

WHY WAS THE CSCP ESTABLISHED?

The ways in which products and services are delivered to our doors have become increasingly complex and global. Actions taken by designers, producers and consumers are all interlinked and can affect each other, and the global environment, in far-reaching ways. For instance, decisions taken by a producer regarding the design of a product may have repercussions for the consumer in terms of the negative environmental effects that result from the use of the product. In the same way, decisions taken by consumers located on one side of the world might influence producers and communities on the other side. The challenge is to manage these interdependencies in a way that advances human development without causing harm to the environment. The CSCP was established in order to meet this challenge.

WHO MAKES UP THE CSCP TEAM?

The CSCP comprises international experts from diverse backgrounds including economics, policy-making, engineering, environmental and social sciences. The CSCP Team has accumulated significant experience in policy development, scientific research, business management and advocacy services in various social and cultural contexts.

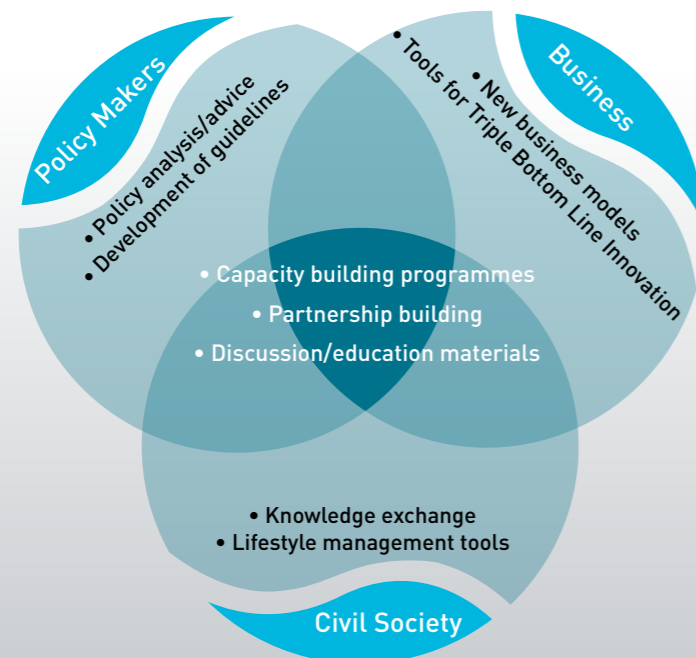
This diversity and professional excellence enables the CSCP to deliver sound and practical advice and solutions in an integrated manner. The CSCP’s influential partners range from small and medium-sized enterprises to large multinationals, from local civil society organisations to UN agencies. These invaluable relationships provide the Centre with footholds around the world.

The CSCP focuses on working with pioneers who are willing to turn the challenges of global consumption and production into an opportunity to create enduring prosperity and wellbeing.

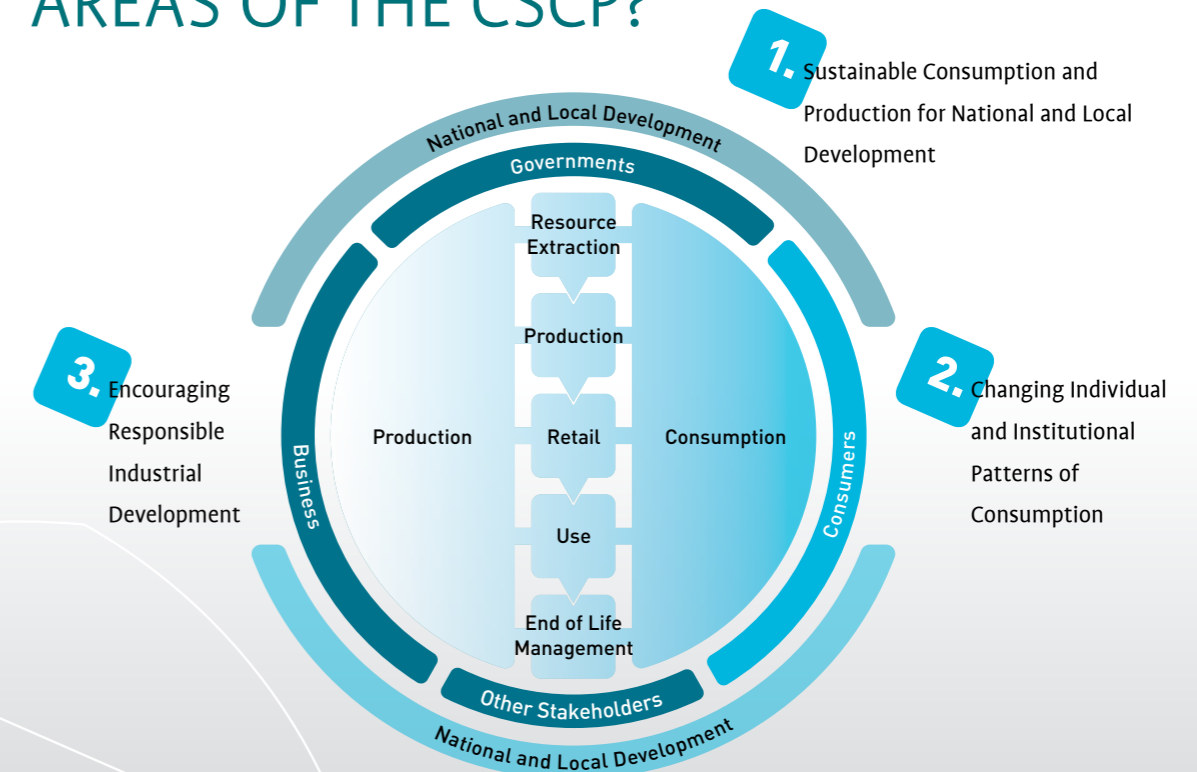


WHAT PRODUCTS AND SERVICES DOES THE CSCP OFFER?

The CSCP has both the scientific knowledge and the practical skills to develop SCP policies and programmes in line with the UN Marrakech Process. We offer a wide range of products and services to different types of partners:



WHAT ARE THE PRIORITY WORKING AREAS OF THE CSCP?



The life cycle of a product or a service - from initial resource extraction, to production, retailing, consumption and, finally, waste management - involves many different parties, potentially in diverse geographical locations. In their daily decision making, all the relevant parties interact with businesses, governments and various stakeholders including non-governmental organisations. This interaction may eventually have significant implications for national and local development issues.



SUSTAINABLE CONSUMPTION AND PRODUCTION FOR NATIONAL AND LOCAL DEVELOPMENT

CAPACITY BUILDING TO TACKLE NATIONAL AND LOCAL DEVELOPMENT NEEDS

Successful SCP policies and programmes should be developed in such a way to enhance the quality of life and to reduce the poverty of the local population. For SCP to reach its maximum potential, we encourage capacity building. This includes awareness raising and training on a variety of tools for achieving SCP for relevant parties in both the public and private sectors.



THE CSCP WILL...

- Mobilise intermediary organisations such as development agencies, financial institutions, information and assistance centres in order that they become instrumental in accelerating the shift towards SCP
- Analyse scientific reports and papers to identify key SCP instruments
- Develop capacity building programmes, guidelines and tools that will enable policy makers to identify SCP priorities. These priorities can then be incorporated into national and local sustainable development strategies consistent with the UN Millennium Development Goals, Poverty Reduction Strategy Papers (PRSPs) and National Development Plans (NDPs)





CHANGING INDIVIDUAL AND INSTITUTIONAL PATTERNS OF CONSUMPTION

INNOVATIVE STRATEGIES TO PROMOTE SUSTAINABLE LIFESTYLES

One of the main points of focus for SCP activities is the need to change the deep-rooted unsustainable patterns of consumption apparent in households and in the public and private sectors. Innovative strategies are necessary, since consumption behaviour is firmly interlinked with price, convenience and status. The roles of “information gatekeepers”, such as retailers and the media, are particularly critical in terms of communicating with consumers and providing information about sustainable lifestyles.

THE CSCP WILL...

- Identify sustainable lifestyle models and establish product responsibilities
- Develop effective means of communicating environmental and social impacts, together with the corresponding responsibilities along product chains, to individual and institutional consumers
- Elaborate policies, guidelines and tools to encourage sustainable procurement by institutional consumers such as public agencies and companies





ENCOURAGING RESPONSIBLE INDUSTRIAL DEVELOPMENT

SUPPORT FOR ENTERPRISES TO UNDERTAKE CORPORATE ENVIRONMENTAL AND SOCIAL RESPONSIBILITY

Realising the implications of global consumption and production patterns, an increasing number of companies are making a commitment to global norms and standards such as the UN Global Compact. Similarly, accountability and transparency are becoming increasingly important factors in business practice and conduct. Consequently, small and medium-sized enterprises (SMEs) along supply chains are affected. To ensure their long-term participation in the market, SMEs need to recognise their environmental and social responsibilities. Provision of solid and clear guidance on the management of responsibilities can benefit both the society and the environment and, simultaneously, create market opportunities.

THE CSCP WILL...

- Identify and promote sustainable business models that simultaneously address environmental concerns and target basic needs of the poor.
- Develop capacity building tools for SMEs and developing countries to plan, implement and review SCP activities
- Advise policy makers on an effective policy instrument mix for encouraging business participation in SCP activities





THE CSCP ACTS AS A CATALYST FOR THE UN MARRAKECH PROCESS

In the Johannesburg Plan of Implementation, signed at the UN World Summit on Sustainable Development in 2002, all governments were called upon to “change unsustainable patterns of consumption and production”. To accelerate the shift towards SCP, the Plan asked them to promote the development of a 10-year framework of programmes (10YFP), which is now also called the “Marrakech Process”. The “implementation challenge” of the Marrakech Process involves (1) organisation of regional consultations, (2) development of regional strategies and operational mechanisms, (3) implementation of concrete programmes and projects at regional, national and local levels, and (4) monitoring and evaluation of progress.

The CSCP supports the Marrakech Process in the areas of both scientific research and project implementation. It provides assistance to the participants in the Process, mainly by analysing the state of the art in SCP policies and activities worldwide, by supporting the work of task forces and by backing the development and application of demonstration projects at various levels.

“We should not be afraid to wish that everyone in the world could become a consumer. The poor need more than food and shelter. They ultimately need to be able to make choices for their material and immaterial wellbeing, just like we all can. This is, of course, an enormous task. We call it the challenge of sustainable consumption and production. And nothing less is the focus of the new Centre”.

Prof. Dr. Klaus Töpfer, former UNEP Executive Director





THE CSCP'S PARTNERS

The CSCP is a Collaborating Centre of the United Nations Environment Programme (UNEP) and the Wuppertal Institute. The UNEP's Production and Consumption Branch promotes sustainable consumption and production patterns and human development through the market. For more information, contact UNEP P&C Branch, www.unep.fr/sustain or write to sc@unep.fr. The mission of the Wuppertal Institute is application-oriented sustainability research. For details, visit www.wupperinst.org.

THE CENTRE IS SUPPORTED BY VARIOUS ORGANISATIONS, INCLUDING:

- German Federal Ministry for Economic Co-operation and Development
- German Federal Ministry for the Environment, Nature Conservation and Nuclear Safety
- State Ministry for the Environment, Agriculture and Consumer Protection, North Rhine-Westphalia, Germany
- Business and Employment Support Agency, Wuppertal, Germany

THE CSCP IS PART OF A DIVERSE NETWORK OF NATIONAL AND INTERNATIONAL PARTNERS. THEIR SPECIFIC BACKGROUNDS, COMPETENCES AND EXPERIENCES ARE VERY VALUABLE FOR OUR WORK.

- AccountAbility, UK
- Association of Development Financing Institutions in Asia and the Pacific (ADFIAP)
- Capacity Building International, Germany (InWEnt)
- German Agency for Technical Co-operation (GTZ)
- Global Reporting Initiative (GRI), The Netherlands
- International Chamber of Commerce (ICC)
- International Institute for Industrial Environmental Economics (IIIEE), Lund University, Sweden
- Oxfam Novib, The Netherlands
- Regional Environmental Centre (REC), Turkey
- State Environmental Protection Administration (SEPA), China
- United Nations Department of Economic and Social Affairs (UN-DESA), Division for Sustainable Development
- Universidad Externado de Columbia
- World Conservation Union (IUCN)
- World Wide Fund for Nature (WWF)
- National Cleaner Production Centres in different countries

The CSCP also welcomes collaboration with other organisations from different economic, ecological and social backgrounds.



UNEP/WUPPERTAL INSTITUTE COLLABORATING
CENTRE ON SUSTAINABLE
CONSUMPTION AND PRODUCTION

Hagenauer Straße 30
42107 Wuppertal | Germany

Tel | + 49 . 202 . 45958 . 10

Fax | + 49 . 202 . 45958 . 31

Website | www.scp-centre.org

E-mail | info@scp-centre.org

HOW TO GET TO THE CSCP - USE PUBLIC TRANSPORT!

FROM DÜSSELDORF AIRPORT TO WUPPERTAL MAIN STATION (Hbf)

From the airport, take the train to Düsseldorf Main Station (Hbf). Change here for the train to Wuppertal Hbf (direction Hagen). The train journey from Düsseldorf Airport to Wuppertal Hbf takes 30-50 minutes.

FROM WUPPERTAL Hbf TO THE CSCP

Take the bus 620/625/635/645 (every 3-5 minutes) from bus terminal 4/5 and alight at the stop for Schleswiger Straße (6 minutes). Turn right into Schleswiger Straße and go up the steps. At the end, turn left and you will see the red brick building of the Huppertsberg Schnürriemen-Fabrik in which the CSCP is situated. Alternatively, you can walk from Wuppertal Hbf to the CSCP in 20 minutes.

BY CAR

From the A46 motorway, take exit 34 (Wuppertal-Elberfeld). Turn left at the next set of traffic lights into Opphofer Straße. Follow this street for 500m and turn right into Hagenauer Straße, where you will see the red brick building of the Huppertsberg Schnürriemen-Fabrik in which the CSCP is situated.

